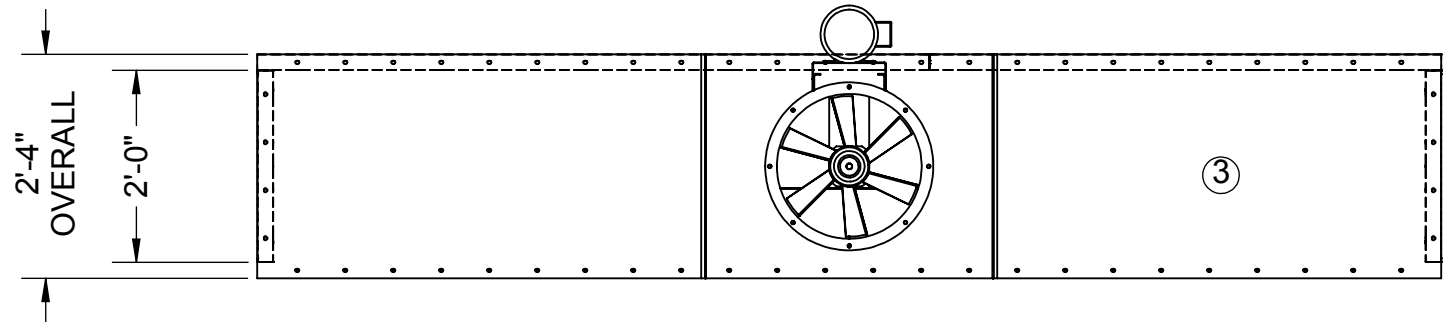
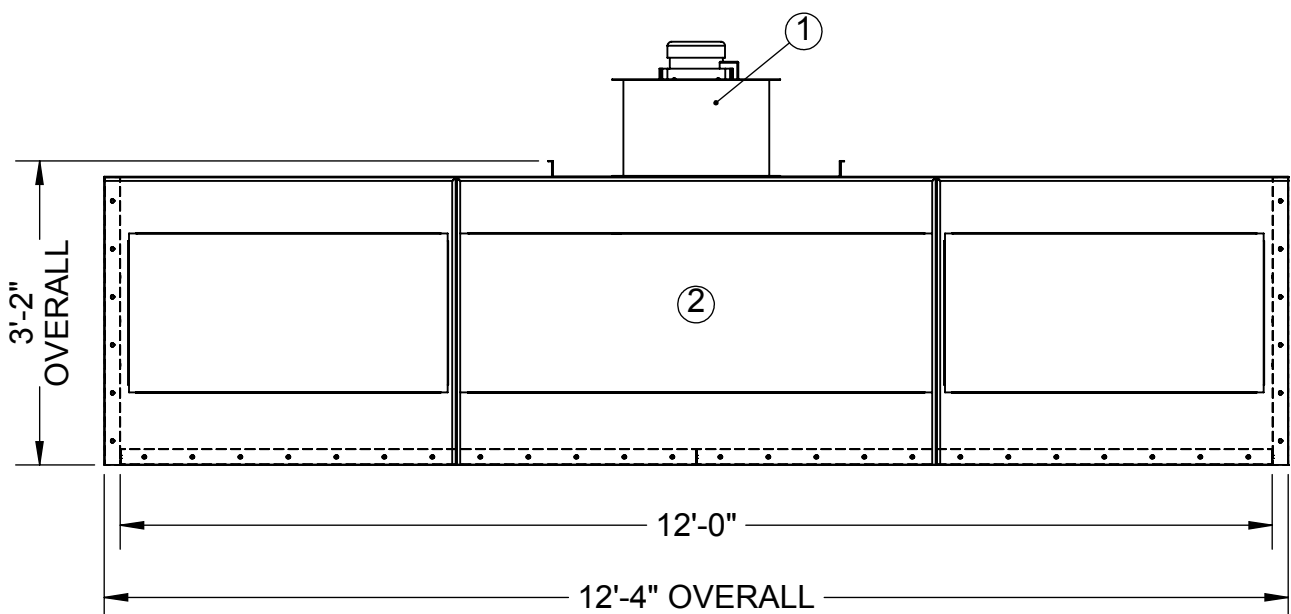


CLASS I, DIVISION 1
 A CLASS I, DIVISION 1 LOCATION IS A LOCATION WHERE IGNITABLE CONCENTRATIONS OF FLAMMABLE GASES, VAPORS OR LIQUIDS: CAN EXIST UNDER NORMAL OPERATING CONDITIONS; MAY EXIST FREQUENTLY BECAUSE OF REPAIR OR MAINTENANCE OPERATIONS OR BECAUSE OF LEAKAGE; OR MAY EXIST BECAUSE OF EQUIPMENT BREAKDOWN THAT SIMULTANEOUSLY CAUSES THE EQUIPMENT TO BECOME A SOURCE OF IGNITION.
 EQUIPMENT INTENDED FOR USE IN A CLASS I, DIVISION 1 AREA IS USUALLY OF THE EXPLOSIONPROOF, INTRINSICALLY SAFE, OR PURGED/PRESSURIZED TYPE.

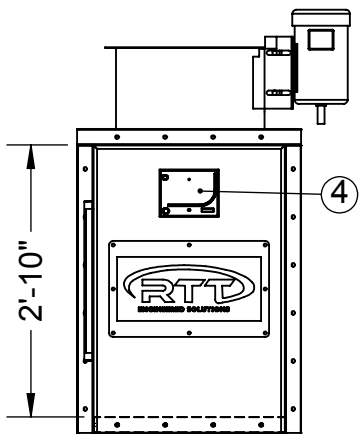
ITEM	QTY.	Description
1	1	18"Ø TUBEAXIAL FAN; RATED FOR 5000 SCFM EXHAUST @ 1/2" SP; DRIVEN BY 1.5 HP ODP TYPE MOTOR
2	1 LOT	EXHAUST FILTERS WITH ASSOCIATED HARDWARE
3	1 LOT	18 GA. GALV. STEEL SHELL
4	1	MANOMETER
5	1	1/2" AIR SOLENOID VALVE (NOT SHOWN)



PLAN VIEW



FRONT VIEW



SIDE ELEVATION

ADDITIONAL DUCTWORK SUPPORT TO SUIT FIELD CONDITIONS TO BE SUPPLIED BY OTHERS.
 ALL ANCHOR BOLTS TO BE SUPPLIED BY OTHERS.

RTT PRODUCTS ARE MANUFACTURED IN ACCORDANCE WITH NFPA-33.
 BOOTH WALLS & CEILING PANELS FABRICATED OF 18 GA. GALVANIZED STEEL IN ACCORDANCE WITH NFPA-33 CHAPTER 5.1.4.

SEE ORDER ACKNOWLEDGEMENT FOR COMPLETE LIST OF PROVIDED STACK, AND OPTIONAL COMPONENTS.

IMPORTANT NOTICE:
 IN THE CONSTRUCTION OF THIS BOOTH THERE MAY BE POSSIBLE FIELD MODIFICATIONS BY THE INSTALLER. THESE MODIFICATIONS MAY INCLUDE, BUT ARE NOT LIMITED TO:

- WELDING
- CUTTING
- NOTCHING
- DRILLING

GENERAL NOTES:

1. WORK CHAMBER WILL BE BOLTED CONSTRUCTION WITH 5/16" BOLTS ON STANDARD 6" CENTERS
2. WORK CHAMBER TO BE 18 GA. GALVANIZED UNPAINTED SHEET METAL EXCEPT AS NOTED.
3. ALL MOTOR CONTROLS, SWITCHES, LIGHT LAMPS OR TUBES, INCLUDING CONNECTIONS TO EQUIPMENT TO BE FURNISHED AND INSTALLED BY CUSTOMER EXCEPT AS NOTED.
4. AMPLE AIR MAKE-UP AND AIR SPACE WITHIN FRONT OF BOOTH MUST BE PROVIDED IN ORDER TO INSURE PROPER OPERATION OF BOOTH.
5. ALL LOCAL, CITY, & STATE PERMITS AND INSURANCE APPROVAL TO BE OBTAINED BY CUSTOMER.
6. CUSTOMER TO FURNISH ROOF PITCH, STACK QUANTITY AND CONFIGURATION IF REQUIRED.

For information on installation of the booth and components, please see our web site at www.rttolutions.com, click on "Resources" on the left side of the page, and then click on "Install Manual".

REVISIONS			
REV.	DESCRIPTION	BY	DATE
A	ECN 17001-CHANGED EXHAUST FILTERS FROM EXF-1151-01 TO EXF-3232	GG	9/26/2017
B	CHANGED FAN PANEL FROM 10 GA. TO 14 GA. ADDED LOGOS.CHANGED FILTERS TO ROLL FILTERS. RTT TITLE BLOCK ADDED	SCS	1/31/2020

PROPRIETARY AND CONFIDENTIAL		
THIS DRAWING, THESE SPECIFICATIONS, AND THE IDEAS CONTAINED HEREIN ARE THE EXCLUSIVE PROPERTY OF RTT ENGINEERED SOLUTIONS. THEY SHALL BE RETURNED UPON DEMAND. NO PERSON SHALL COPY, USE, OR DISCLOSE THIS DRAWING, THESE SPECIFICATIONS, OR THE IDEAS CONTAINED HEREIN WITHOUT THE EXPRESS CONSENT OF RTT ENGINEERED SOLUTIONS. IT IS THE RESPONSIBILITY OF THE RECIPIENT TO CHECK ALL DETAIL INFORMATION AGAINST THE CONTRACT DOCUMENTATION. RTT ENGINEERED SOLUTIONS ACCEPTS NO LIABILITY OR RESPONSIBILITY FOR ANY LOSS OR DAMAGE SUFFERED AS A RESULT OF (OR CONNECTED WITH) THE USE OR MISUSE OF THE CAD DATA SUPPLIED FOR INFORMATION ONLY. ONCE THE DATA IS INTRODUCED INTO YOUR OWN CAD OR OTHER SYSTEM, RTT ENGINEERED SOLUTIONS CAN TAKE NO RESPONSIBILITY FOR ITS ACCURACY.		
DRAWN	SCS	1/31/2020
MODELER	WD	
PROJECT ENG	PE	
SOLD BY	Salesman	
VOLTAGE:		
MATERIAL		
18 GA. GALV. STEEL		
FINISH		
DO NOT SCALE DRAWING		

RTT ENGINEERED SOLUTIONS
 2975 DISCOVERY BLVD.
 ROCKWALL, TX 75032
 PHONE (972) 772-1919
 FAX (972) 772-1833
 WWW.RTTSOLUTIONS.COM

P.O.# Enter Cust PO#
 FILENAME:
 EB-12-03-02-00-S REV. B

JOB #	
Project Number	
DISTRIBUTER:	
Enter Distributer	
CUSTOMER	
Enter End User	
SIZE	DWG. TITLE
B	EB-12-03-02-00-S
REV	B
SCALE: 1:24	SHEET 1 OF 4

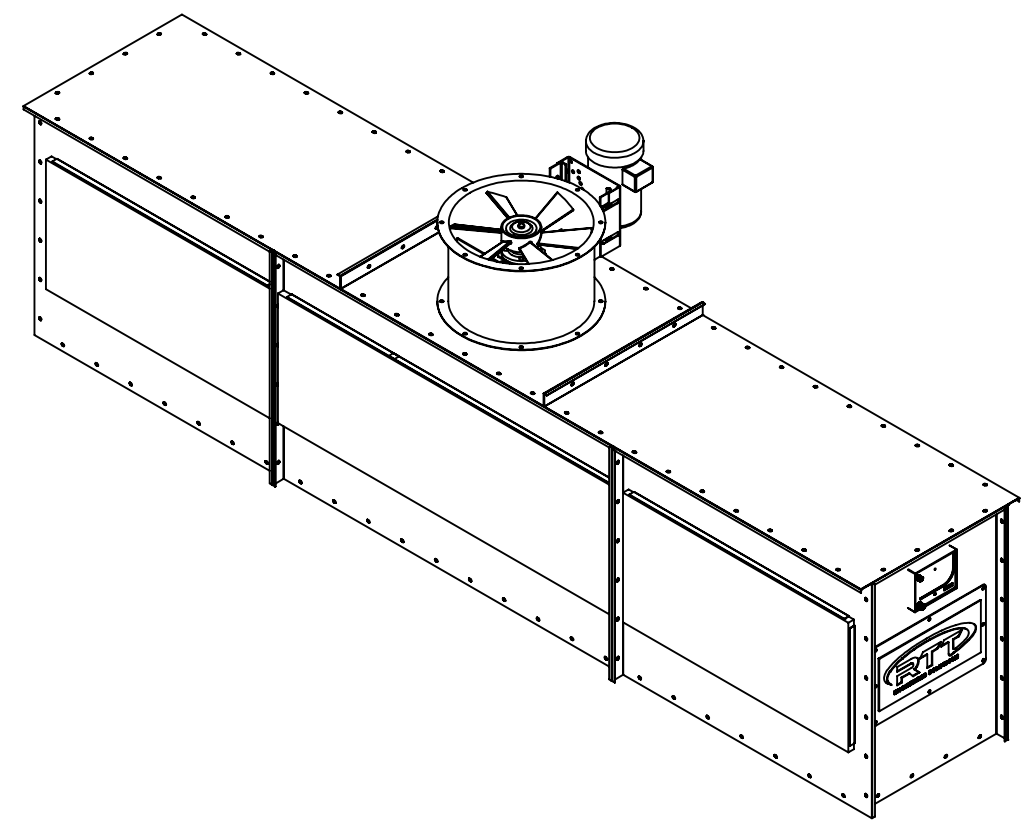
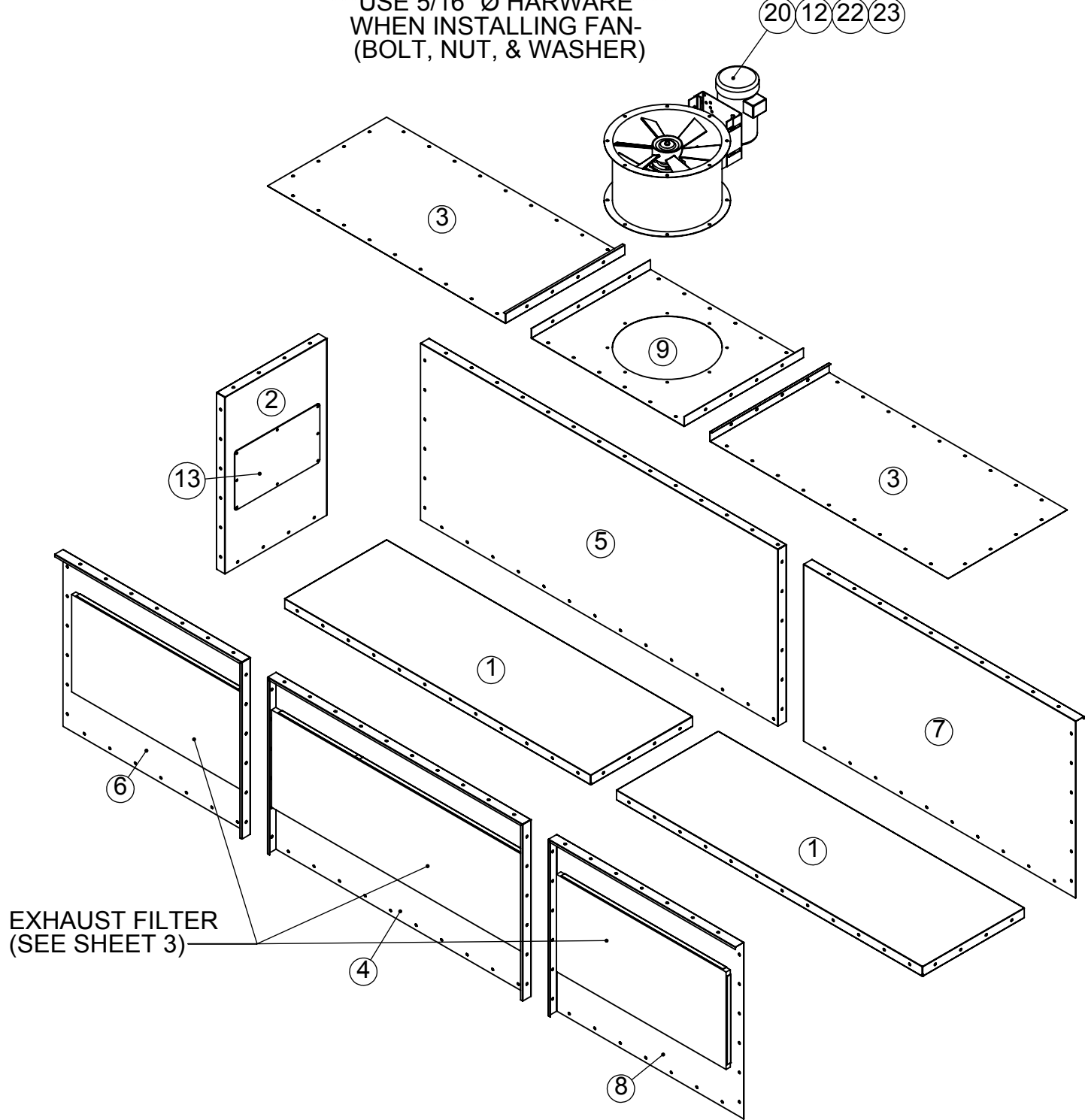
8 7 6 5 4 3 2 1

***USE 5/16" Ø HARWARE ***
WHEN INSTALLING FAN-
(BOLT, NUT, & WASHER)

20 12 22 23

D
C
B
A

D
C
B
A

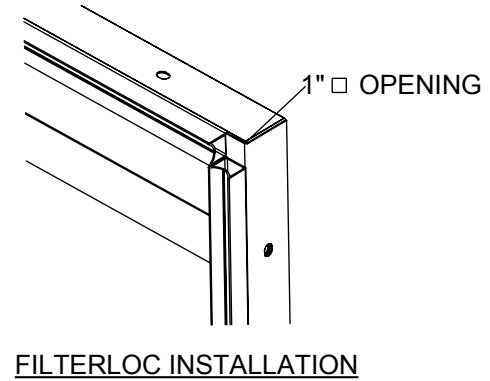


EXHAUST FILTER
(SEE SHEET 3)

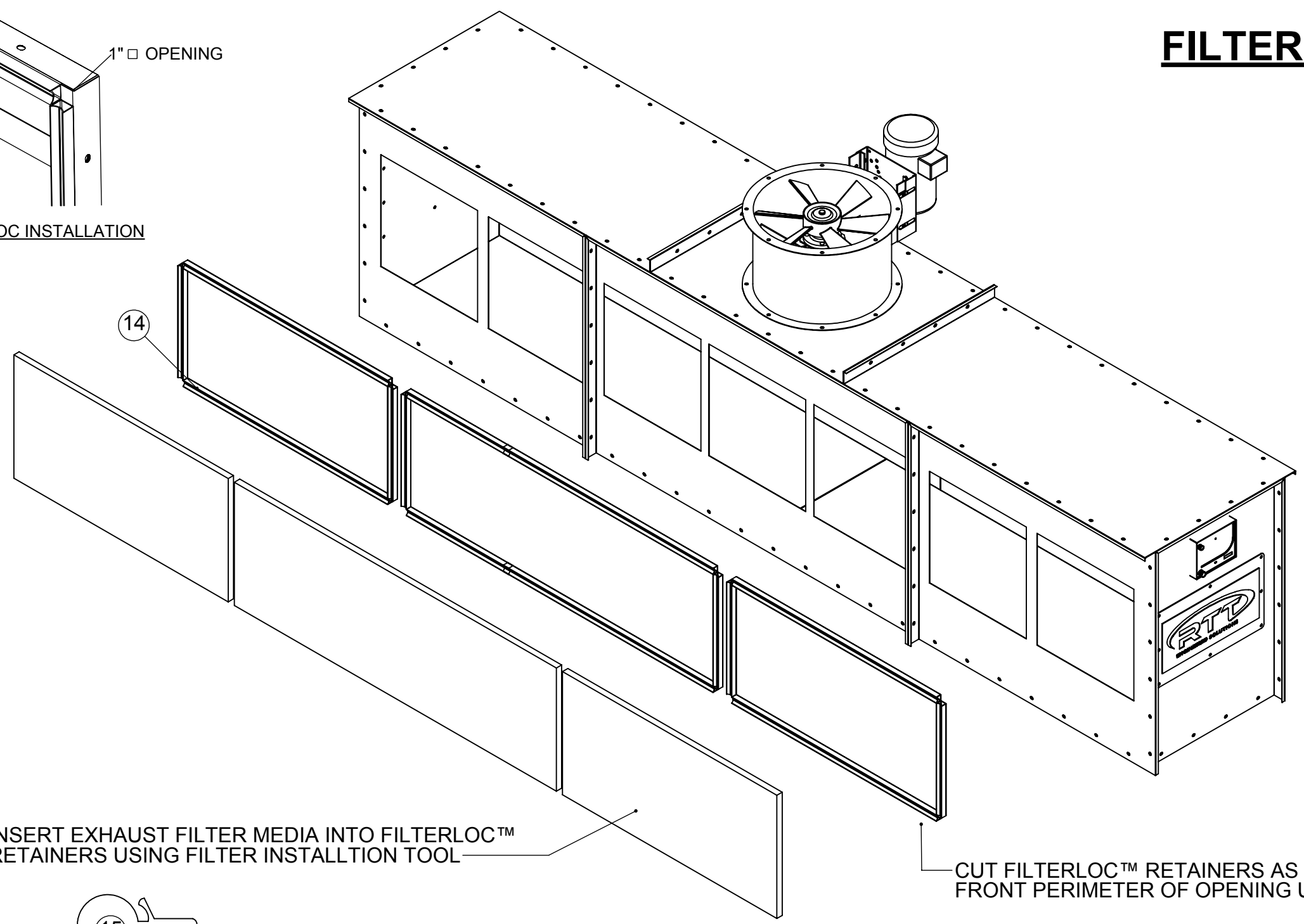
<p>PROPRIETARY AND CONFIDENTIAL</p> <p>THIS DRAWING, THESE SPECIFICATIONS, AND THE IDEAS CONTAINED HEREIN ARE THE EXCLUSIVE PROPERTY OF RTT ENGINEERED SOLUTIONS. THEY SHALL BE RETURNED UPON DEMAND. NO PERSON SHALL COPY, USE, OR DISCLOSE THIS DRAWING, THESE SPECIFICATIONS, OR THE IDEAS CONTAINED HEREIN WITHOUT THE EXPRESS CONSENT OF RTT ENGINEERED SOLUTIONS. IT IS THE RESPONSIBILITY OF THE RECIPIENT TO CHECK ALL DETAIL INFORMATION AGAINST THE CONTRACT DOCUMENTATION. RTT ENGINEERED SOLUTIONS ACCEPTS NO LIABILITY OR RESPONSIBILITY FOR ANY LOSS OR DAMAGE SUFFERED AS A RESULT OF (OR CONNECTED WITH) THE USE OR MISUSE OF THE CAD DATA SUPPLIED FOR INFORMATION ONLY. ONCE THE DATA IS INTRODUCED INTO YOUR OWN CAD OR OTHER SYSTEM, RTT ENGINEERED SOLUTIONS CAN TAKE NO RESPONSIBILITY FOR ITS ACCURACY.</p>	<p>DRAWN SCS 1/31/2020</p>		<p>JOB #</p>		
	<p>MODELER WD</p>		<p>Project Number</p>		
	<p>PROJECT ENG PE</p>	<p>SOLD BY Salesman</p>	<p>DISTRIBUTER:</p> <p>Enter Distributer</p>	<p>CUSTOMER</p>	
	<p>VOLTAGE:</p>	<p>Enter End User</p>			
<p>MATERIAL</p> <p>18 GA. GALV. STEEL</p>	<p>RTT ENGINEERED SOLUTIONS 2975 DISCOVERY BLVD. ROCKWALL, TX 75032 PHONE (972) 772-1919 FAX (972) 772-1833 WWW.RTTSOLUTIONS.COM</p>	<p>SIZE B</p>		<p>DWG. TITLE EB-12-03-02-00-S</p>	<p>REV B</p>
<p>FINISH</p>	<p>DO NOT SCALE DRAWING</p>	<p>P.O.# Enter Cust PO#</p> <p>FILENAME: EB-12-03-02-00-S REV. B</p>	<p>SCALE: 1:24</p>	<p>SHEET 2 OF 4</p>	

8 7 6 5 4 3 2 1

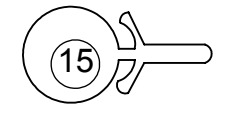
FILTER INSTALLATION



FILTERLOC INSTALLATION



INSERT EXHAUST FILTER MEDIA INTO FILTERLOC™ RETAINERS USING FILTER INSTALLTION TOOL

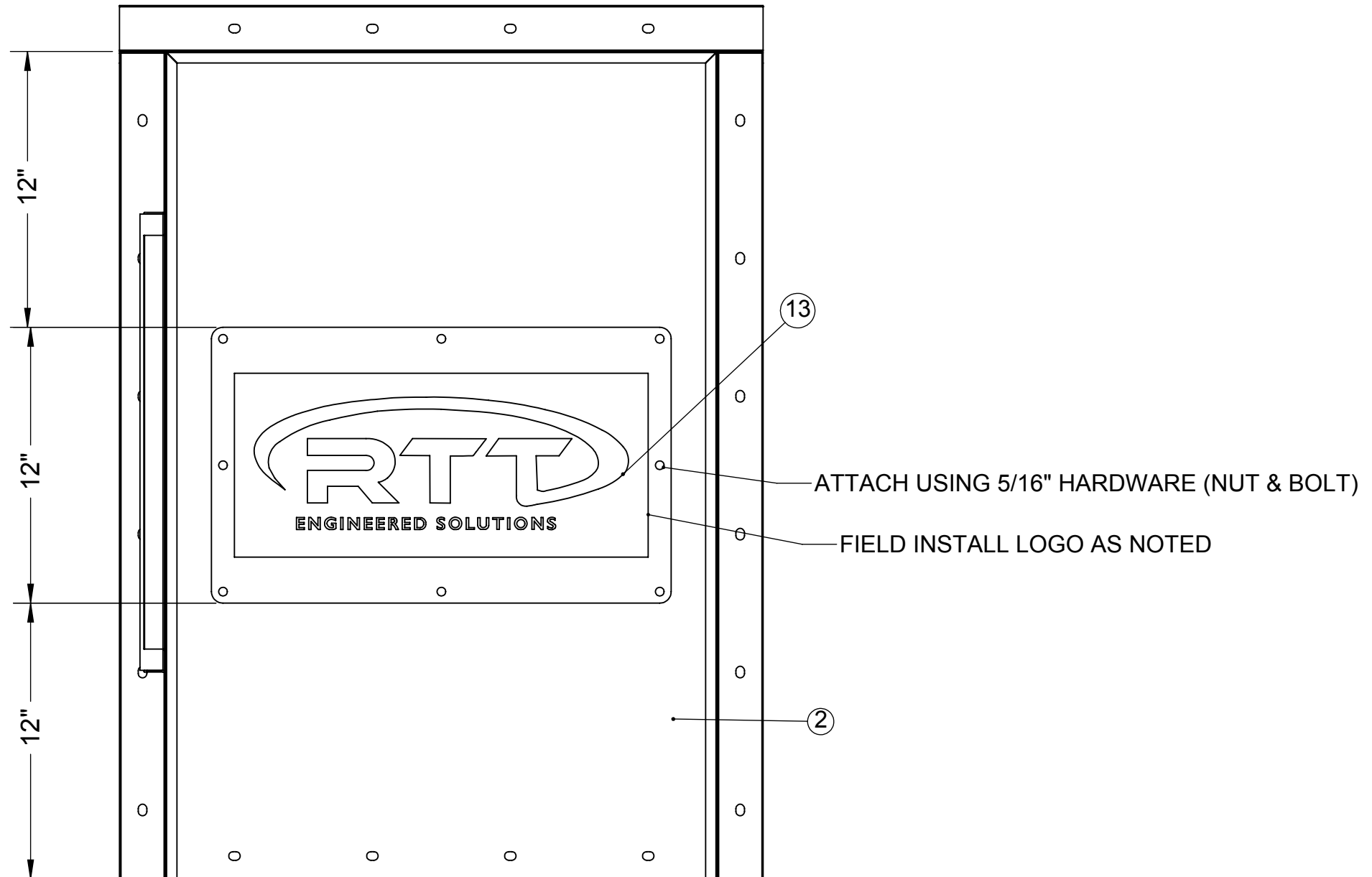
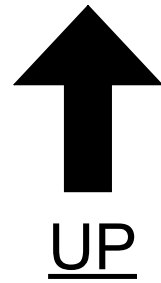


CUT FILTERLOC™ RETAINERS AS NEEDED AND ATTACH AROUND FRONT PERIMETER OF OPENING USING SELF-TAPPING SCREWS

FOR INSTALLATION HELP
SEE FILTER INSTALLATION VIDEO:
<https://rttsolutions.com/filterloc-management-technology.html>

<p>PROPRIETARY AND CONFIDENTIAL</p> <p>THIS DRAWING, THESE SPECIFICATIONS, AND THE IDEAS CONTAINED HEREIN ARE THE EXCLUSIVE PROPERTY OF RTT ENGINEERED SOLUTIONS. THEY SHALL BE RETURNED UPON DEMAND. NO PERSON SHALL COPY, USE, OR DISCLOSE THIS DRAWING, THESE SPECIFICATIONS, OR THE IDEAS CONTAINED HEREIN WITHOUT THE EXPRESS CONSENT OF RTT ENGINEERED SOLUTIONS. IT IS THE RESPONSIBILITY OF THE RECIPIENT TO CHECK ALL DETAIL INFORMATION AGAINST THE CONTRACT DOCUMENTATION. RTT ENGINEERED SOLUTIONS ACCEPTS NO LIABILITY OR RESPONSIBILITY FOR ANY LOSS OR DAMAGE SUFFERED AS A RESULT OF (OR CONNECTED WITH) THE USE OR MISUSE OF THE CAD DATA SUPPLIED FOR INFORMATION ONLY. ONCE THE DATA IS INTRODUCED INTO YOUR OWN CAD OR OTHER SYSTEM, RTT ENGINEERED SOLUTIONS CAN TAKE NO RESPONSIBILITY FOR ITS ACCURACY.</p>	DRAWN: SCS 1/31/2020 MODELER: WD PROJECT ENG: PE SOLD BY: Salesman	<p>RTT ENGINEERED SOLUTIONS 2975 DISCOVERY BLVD. ROCKWALL, TX 75032 PHONE (972) 772-1919 FAX (972) 772-1833 WWW.RTTSOLUTIONS.COM</p>	JOB # Project Number	
	VOLTAGE: MATERIAL: 18 GA. GALV. STEEL FINISH:		DISTRIBUTER: Enter Distributer	
	DO NOT SCALE DRAWING		CUSTOMER: Enter End User	
	P.O.# Enter Cust PO# FILENAME: EB-12-03-02-00-S REV. B		SIZE: B DWG. TITLE: EB-12-03-02-00-S SCALE: 1:16	REV: B SHEET 3 OF 4

LOGO INSTALLATION PAGE



<p>PROPRIETARY AND CONFIDENTIAL</p> <p>THIS DRAWING, THESE SPECIFICATIONS, AND THE IDEAS CONTAINED HEREIN ARE THE EXCLUSIVE PROPERTY OF RTT ENGINEERED SOLUTIONS. THEY SHALL BE RETURNED UPON DEMAND. NO PERSON SHALL COPY, USE, OR DISCLOSE THIS DRAWING, THESE SPECIFICATIONS, OR THE IDEAS CONTAINED HEREIN WITHOUT THE EXPRESS CONSENT OF RTT ENGINEERED SOLUTIONS. IT IS THE RESPONSIBILITY OF THE RECIPIENT TO CHECK ALL DETAIL INFORMATION AGAINST THE CONTRACT DOCUMENTATION. RTT ENGINEERED SOLUTIONS ACCEPTS NO LIABILITY OR RESPONSIBILITY FOR ANY LOSS OR DAMAGE SUFFERED AS A RESULT OF (OR CONNECTED WITH) THE USE OR MISUSE OF THE CAD DATA SUPPLIED FOR INFORMATION ONLY. ONCE THE DATA IS INTRODUCED INTO YOUR OWN CAD OR OTHER SYSTEM, RTT ENGINEERED SOLUTIONS CAN TAKE NO RESPONSIBILITY FOR ITS ACCURACY.</p>	<table border="1"> <tr><td>DRAWN</td><td>SCS</td><td>1/31/2020</td></tr> <tr><td>MODELER</td><td>WD</td><td></td></tr> <tr><td>PROJECT ENG</td><td>PE</td><td></td></tr> <tr><td>SOLD BY</td><td>Salesman</td><td></td></tr> </table>	DRAWN	SCS	1/31/2020	MODELER	WD		PROJECT ENG	PE		SOLD BY	Salesman		<p>RTT ENGINEERED SOLUTIONS 2975 DISCOVERY BLVD. ROCKWALL, TX 75032 PHONE (972) 772-1919 FAX (972) 772-1833 WWW.RTTSOLUTIONS.COM</p>	JOB # Project Number	
	DRAWN	SCS	1/31/2020													
	MODELER	WD														
	PROJECT ENG	PE														
SOLD BY	Salesman															
VOLTAGE: 	DISTRIBUTER: Enter Distributer															
MATERIAL 18 GA. GALV. STEEL	CUSTOMER Enter End User															
FINISH DO NOT SCALE DRAWING	P.O.# Enter Cust PO# FILENAME: EB-12-03-02-00-S REV. B	SIZE B	DWG. TITLE EB-12-03-02-00-S	REV B												