

#4071 - Grapppler Frame Straightener

CHAMP®

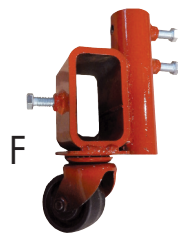
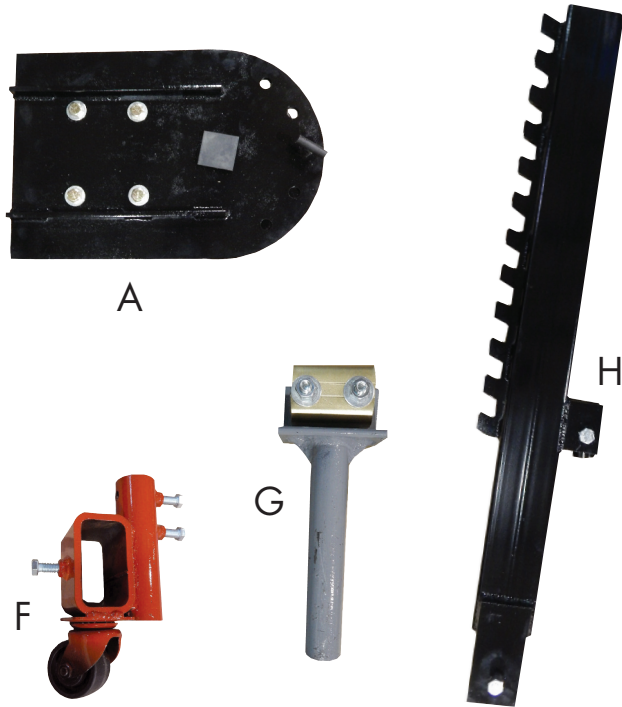


Champ Frame Straightening Equipment, Inc.

Parts List

#4071 - Champ Grappler Frame Straightener

- A** - (1) Base Plate (with main beam pin & locking pin & four clamp arm mounting bolts)
- B** - (1) Main Beam (with pulling tower locking pin)
- C** - (1) Swivel Beam (with male ram coupler)
- D** - (2) Short Clamp Arm
- E** - (2) Long Clamp Arm
- F** - (4) Pinch Weld Clamp Mounting base
- G** - (4) Pinch Weld Clamp Assembly
- H** - (1) Pulling Tower (with female ram coupler)
- I** - (1) 10 Ton Pump
- J** - (1) 10 Ton Ram
- K** - (1) 6' Hydraulic Hose
- L** - (1) Hose Half Coupler
- M** - (4) Wheel Stands



K

L

I

J

M

B

C

D

E

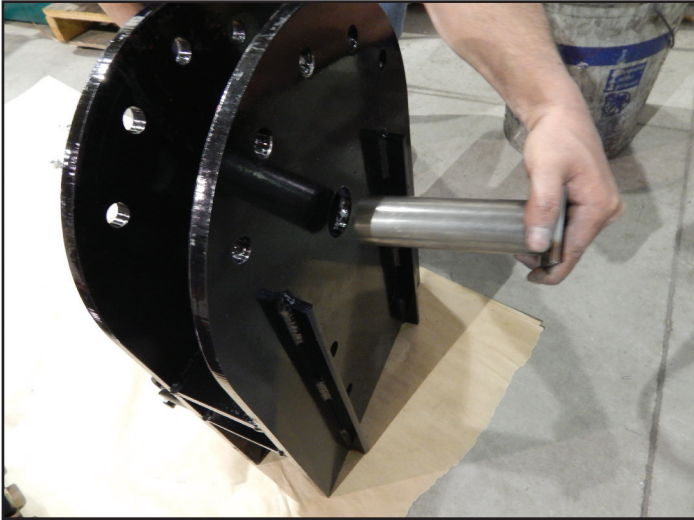
A

G

H

F

Instructions



1. Remove main beam pin, locking pin and the four clamp arm mounting bolts from the Base Plate (A).



2. Attach Main Beam (B) to the Base Plate (A).



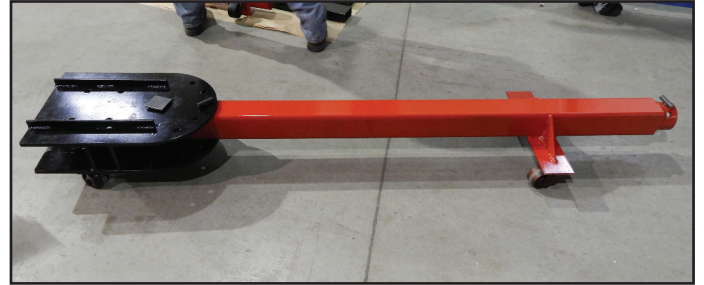
3. Insert main beam pin through Base Plate and Main Beam.



4. Lock main beam pin into place with the main beam bolt screwed in at the bottom of the Base Plate.



- 5.** Insert the locking pin into the Base Plate and Main Beam.



- 6.** Assembled Base Plate and Main Beam.



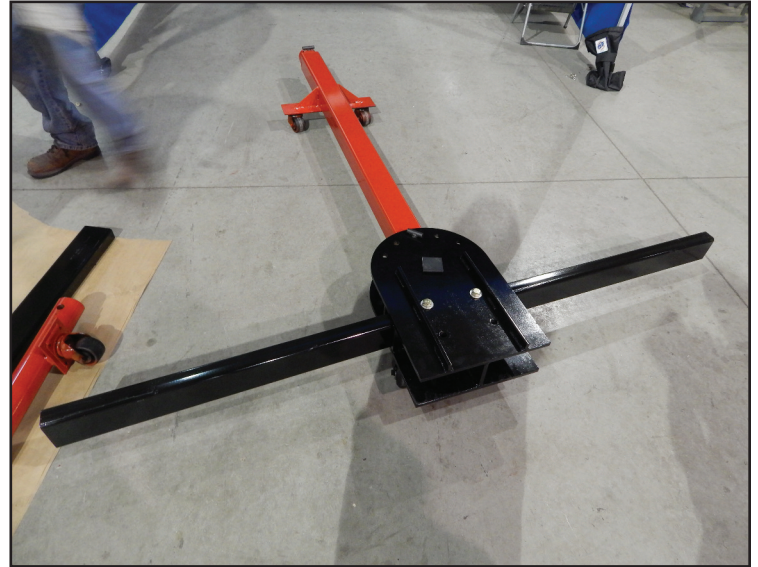
- 7.** Attach the Short Clamp Arm (D) to the Base Plate (A).



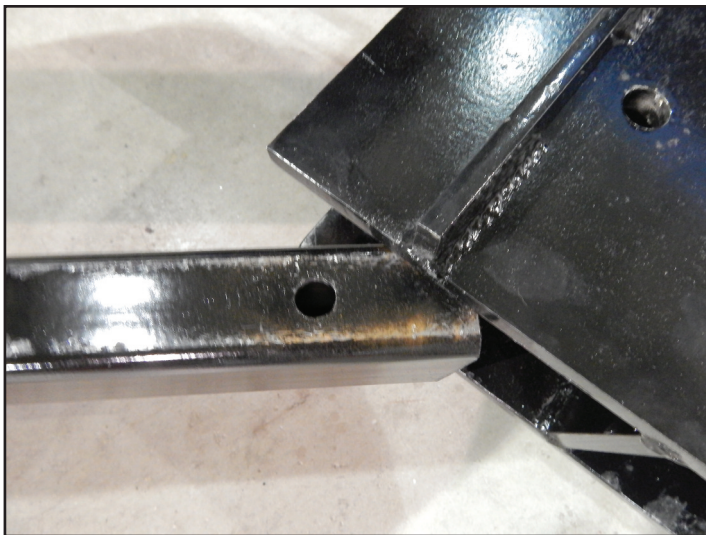
- 8.** Insert the clamp arm mounting bolt through the Base Plate and the Short Clamp Arm.



- 9.** Attach the other Short Clamp Arm (D) on the other side of the Base Plate (A) and insert a clamp arm mounting bolt.



- 10.** Assembled Base Plate with Short Clamp Arms.



- 11.** Attach the Long Clamp Arm (E) to the Base Plate (A).



- 12.** Insert a clamp arm mounting bolt through the Base Plate and the Long Clamp Arm. Install the other Long Clamp Arm with clamp arm mounting bolt to the other side of the Base Plate.



13. Base Plate with attached Clamp Arms.



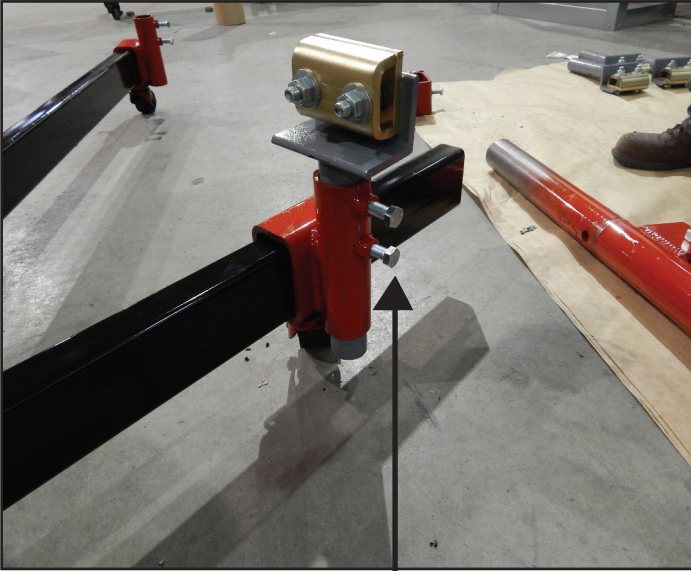
14. Slide the Pinchweld Clamp Mounting Bases (F) on each of the Clamp Arms (D)(E).



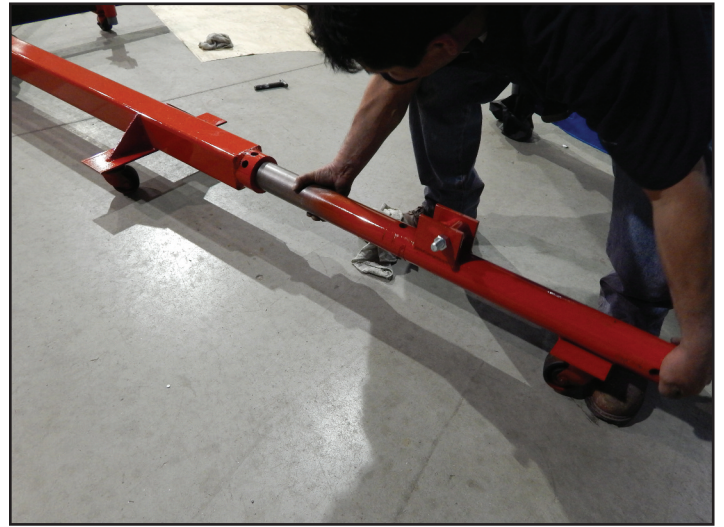
15. Locking bolt used to lock clamp in place when loading car.



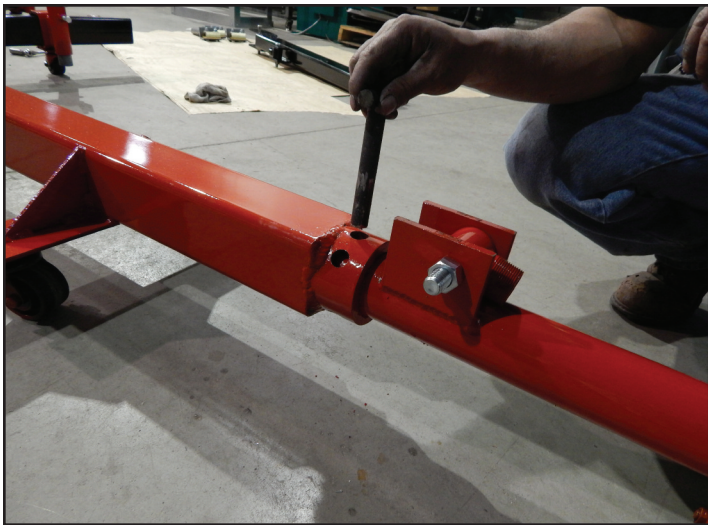
16. Attach the Pinchweld Clamp Assembly (G) to the Pinchweld Clamp Mounting Base (F).



17. After clamping car to the machine, tighten these bolts very tight.



18. Attach the Swivel Beam (C) into the Main Beam (B).



19. Insert locking pin to hold beam in place.



20. Remove the bolt from the Pulling Tower (H).



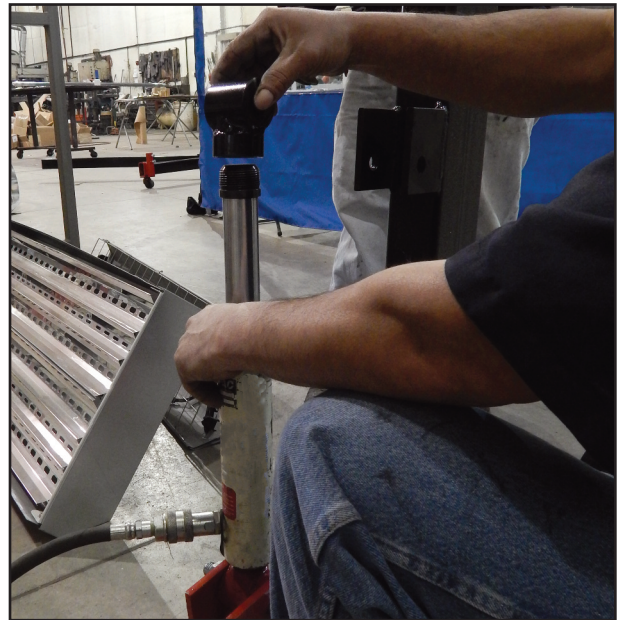
21. Attach the Pulling Tower (H) to the Swivel Beam (C).



22. Insert the bolt to lock the Pulling Tower into place.



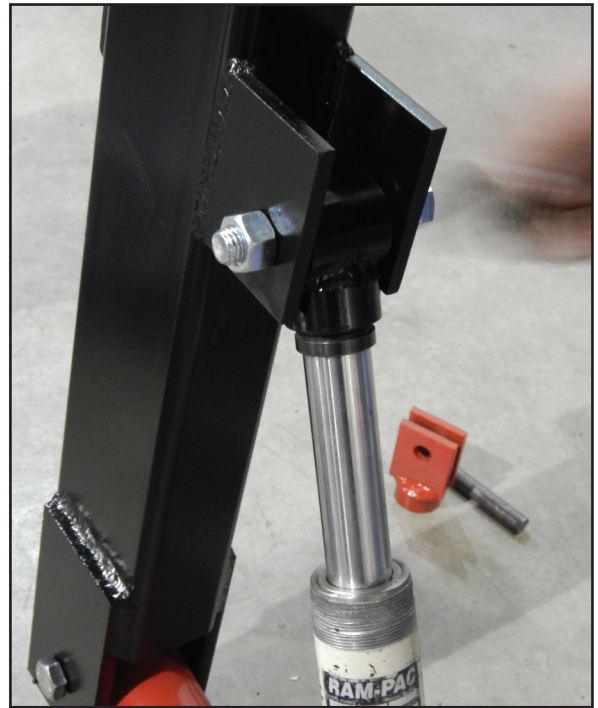
23. Attach the 10 Ton Ram (J) to the Male Ram Coupler located on the Swivel Beam (C).



24. Remove the Female Ram Coupler from the Pulling Tower (H) and attach it to the top of the Ram (J).



- 21.** Attach the Ram Coupler to the Pulling Tower and tighten bolt securely.



- 22.** Ram attached to Pulling Tower (H).



- 23.** Attach the Hose Half Coupler (L) to the Ram. Attach the 6' Hydraulic Hose (K) to the Hose Half Coupler. Attach the other end of the hose to the 10 Ton Pump (I). Your Grappler is now ready for use.

Your Grappler Frame Straightener is now assembled and ready to use.

CHAMP®



Champ Frame Straightening Equipment, Inc.