

(10) 4-TUBE FLUORESCENT LIGHT FIXTURES
WITH 32W 120/277 MULTI-VOLT BALLASTS
BULBS NOT INCLUDED.

(23) WIRE FRAME TACKY
POLY 20 X 20" INTAKE FILTERS

30" TUBE AXIAL FAN
3 HP
3 PHASE
12,600 CFM

EXHAUST FILTER MEDIA
24" X 114"

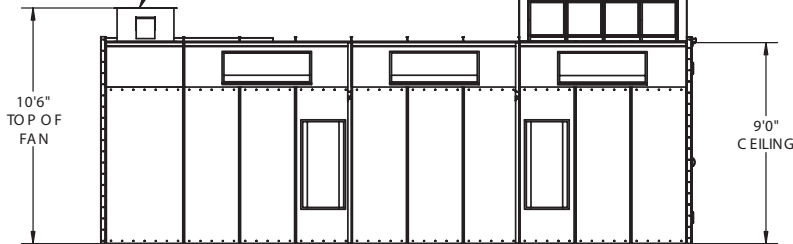
26'0" I.D.

14'0" I.D.

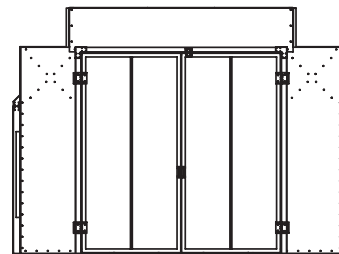
NOTE:

18 GAUGE GALVANIZED STEEL G-90 PANELS
CONSTRUCTION IN ACCORDANCE WITH
NFPA-33 AND OSHA 1910.

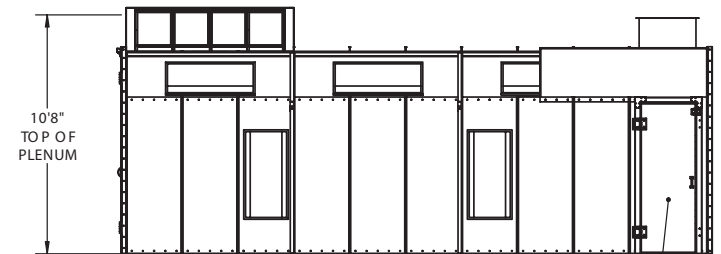
PLAN VIEW



SIDE ELEVATION



FRONT ELEVATION



SIDE ELEVATION

30" X 84"
PERSONNEL DOOR
(INCLUDES HANDLE AND PANIC LATCHES)